

# TEST REPORT

**1. Applicant**

\* Client Name : KH-FEELUX Co. Ltd.  
\* Address : 235-48 Gwangjeok-ro Gwangjeok-myeon Yangju-si Gyeonggi-do 482-844 Korea  
\* Date of Receipt : 210804

**2. Purpose of Report :****3. Number of Report :****4. Test Standard / Item :** / 210804 DVP-24V-C90-R-3500K**5. Test Period :** 210804 ~ 210804**6. Test Environment**

\* Ambient Temp. : 28.0 +- 3 °C  
\* Relative Humidity : 63.9 +- 10 % RH

**7. Test Item**

\* Name of Product :  
\* Rating :  
\* Model :

**8. Test Result :** Refer to the attachment

Confirmation	Test by		Technical manager	
	JSY	Sign	JSY	Sign

\*\*\*\*\*

- \* The result shown in this test report refer only to the sample(s) tested unless otherwise stated.
- \* This report cannot be reproduced, except in full.
- \* This report is for reference only. It cannot replace the report by standard organization(s).

## Result

Report Number	Sample Name	Sample Number	Test Standard

Test Item	Unit	Result	Notice
Beam Distribution Test		See Attachement	
ATHD	%	0.0	
CIE 1931 Cx, Cy		0.4156 , 0.3960	
Correlated Color Temperature	K	3342	
Ra		92.02	
Power Factor		1.000	
Input Voltage	V	24.000	
Input Current	A	0.108	
Input Watt	W	2.59	
Lamp Flux	lm	187.9	
Efficient	lm/W	72.49	
luminous Intensity (Max , Center)	cd	407 , 405	
Illuminance	lx	405	1 m
		101	2 m
		45	3 m

\* This test result is for the sample provided by the client.

\* Sample photo

Click to load image

Luminaire

Lamp

No. of lamps 1

Voltage (V) 24

Lamp flux (lm) 188

Current (A) 0.108

Total flux (lm) 188

Power Factor 1

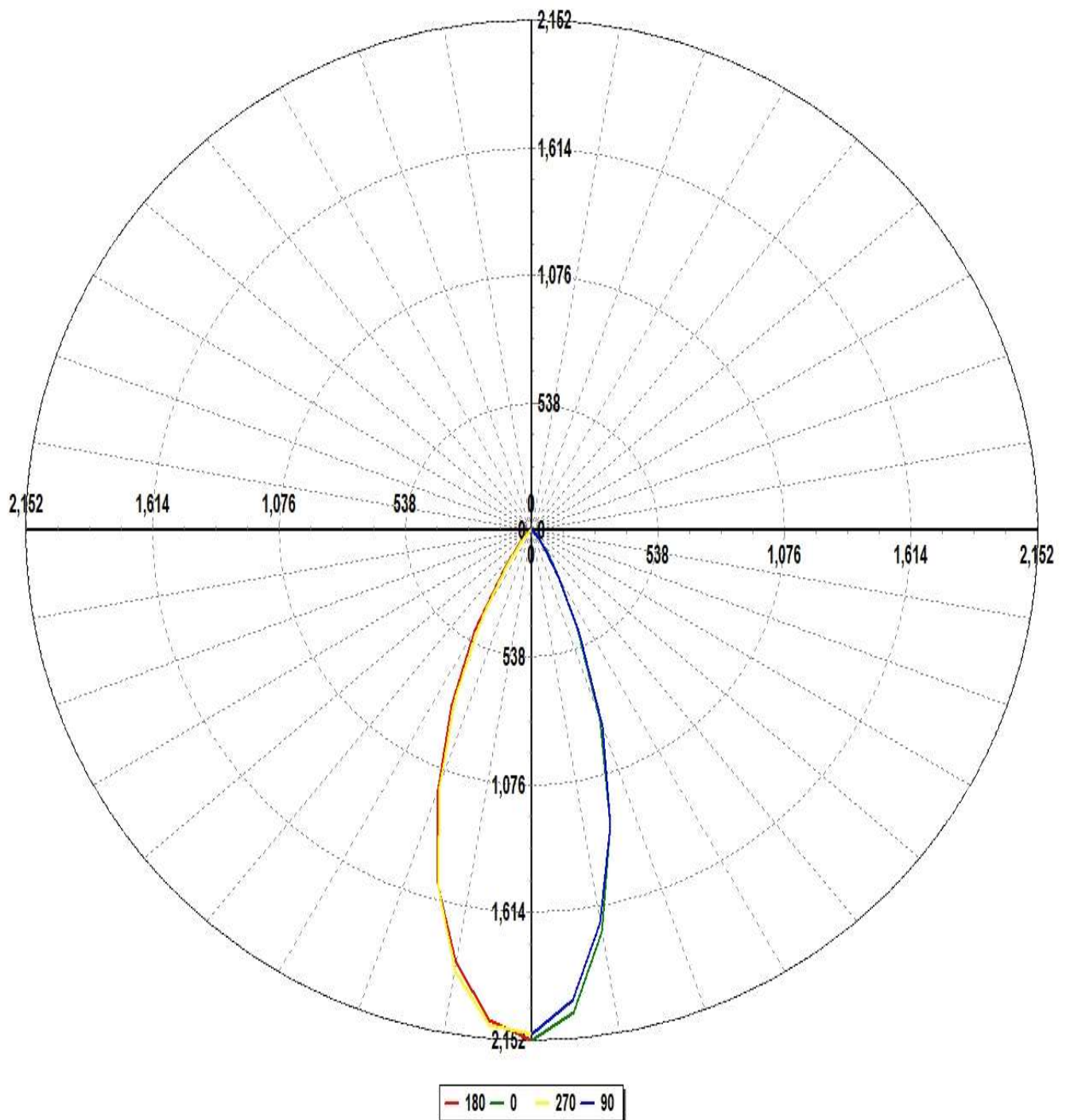
Report

Filename 210804 DVP-24V-C90-R-3500K.jdt

Operator

Date 2021-08-04 오후 4:07:39

## Luminous Intensity Distribution



Luminaire

Lamp

No. of lamps 1

Voltage (V) 24

Report

Filename 210804 DVP-24V-C90-R-3500K.jdt

Lamp flux (lm) 188

Current (A) 0.108

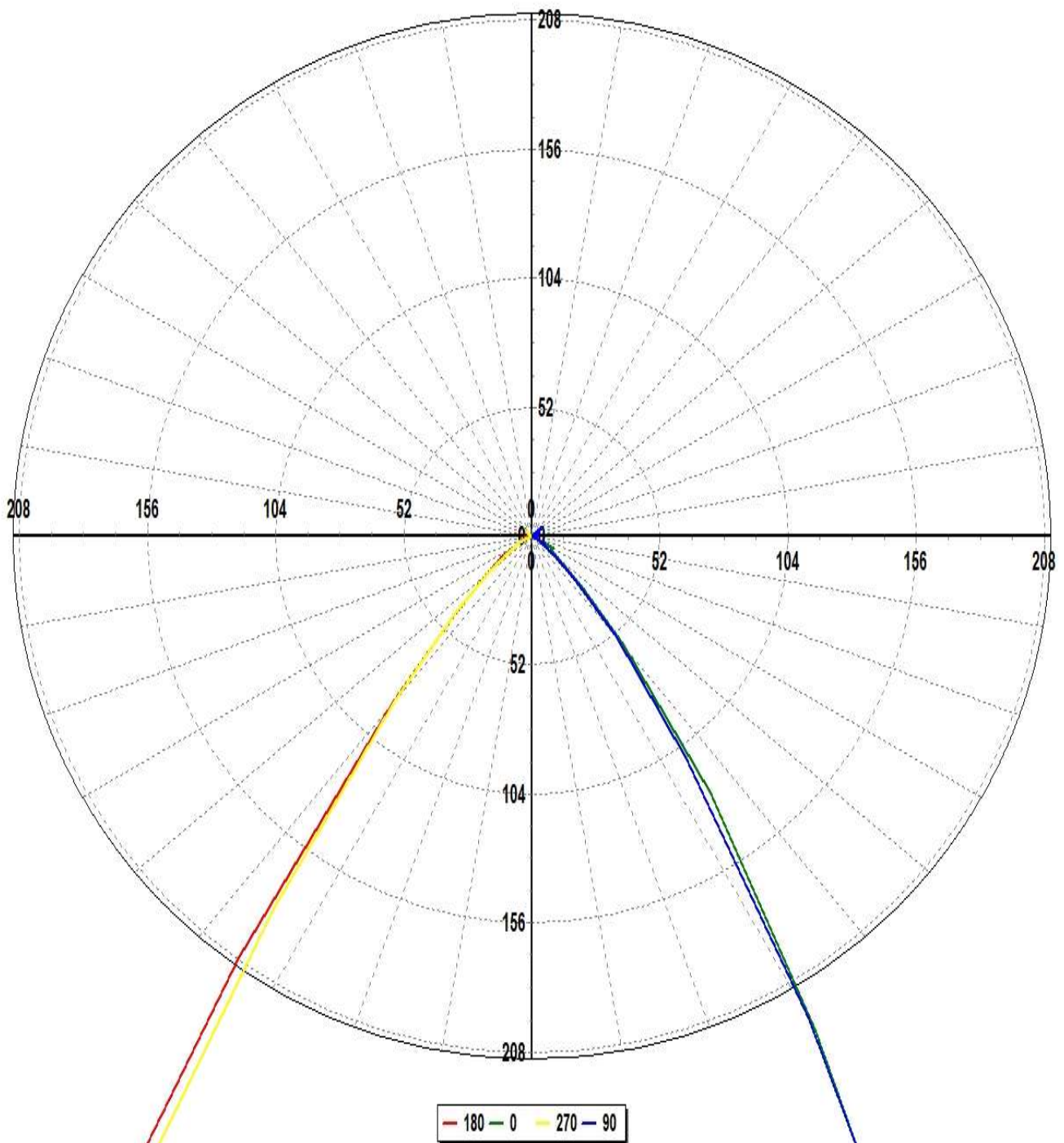
Operator

Total flux (lm) 188

Power Factor 1

Date 2021-08-04 오후 4:07:39

## Luminous Intensity Distribution (Lowest 10%)



# Luminaire

## Lamp

No. of lamps	1	Voltage (V)	24	Report	Filename 210804 DVP-24V-C90-R-3500K.jdt
Lamp flux (lm)	188	Current (A)	0.108	Operator	
Total flux (lm)	188	Power Factor	1	Date	2021-08-04 오후 4:07:39

## Luminous Intensity Data

Maximum (cd) : 407

Minimum (cd) : -1

G/C	0	5	10	15	20	25	30	35	40	45	50
0	404.92	405.93	405.28	406.28	403.33	405.1	406.89	402.09	402.24	400.75	400.63
5	384.62	381.27	381.56	380.16	379.96	377.58	377.83	376.61	375.54	375.74	373.22
10	323.86	320.63	319.47	316.5	316.15	313.77	315.62	311.84	313.32	311.6	313.61
15	242.66	239.01	240.12	235.83	235.73	232.68	235.28	231.87	232.9	231.67	233.39
20	160.71	155.85	156.85	152.43	153.9	148.98	152.56	148.68	151.89	150.21	154.54
25	84.85	80.9	81.46	78.23	77.93	74.77	75.31	72.92	74.56	73.42	75.46
30	43.25	40.96	41.46	39.05	38.01	36.29	35.32	34.14	34.76	33.69	34.19
35	23.74	22.03	21.71	19.76	19.1	17.8	17.34	17.06	15.97	15.61	16.05
40	10.89	11.07	10.18	9.23	8.67	8.21	8.51	7.18	7.74	6.94	7.14
45	5.43	4.57	4.86	3.32	4.11	3.98	3.75	3.77	3.76	2.98	3.71
50	2.46	2.82	2.04	2.1	1.79	1.11	2.03	1.69	1.97	1.26	0.93
55	1.75	1.61	1.35	1.6	1.08	1.59	0.77	1.31	1.27	1.32	1.75
60	1.9	1.46	0.45	0.69	-0.01	1.1	0.72	0.83	0.09	0.6	0.56
65	-0.2	0.6	0.35	-0.41	0.42	0	-0.36	-0.51	0.01	-0.02	-0.43
70	0.32	-0.68	0.65	-0.05	-0.14	-0.16	0.17	0.06	0.11	-0.12	-0.4
75	-0.94	0.16	0.09	-0.01	-0.49	0.46	-0.11	-0.21	-0.15	0.22	0.15
80	-0.36	0.18	-0.19	-0.49	0.45	0.03	0.1	-0.2	0.04	0.22	-0.08
85	0.24	0.39	-0.13	-0.1	0.01	0	0.15	0.21	-0.31	0.15	0.65
90	-0.42	0.27	-0.44	-0.03	-0.45	-0.14	0.46	0.47	-0.26	0.33	-0.29
95	-0.58	0.86	-0.16	-0.4	0.35	0.03	-0.03	0.49	-0.45	-0.51	0.2
100	-0.19	0.12	-0.34	0.37	0.1	0.24	0.45	-0.59	-0.01	0.1	0.02
105	0.43	0.08	0.29	0.51	0.28	-0.14	-0.4	0.12	0.18	0.09	0.48
110	-0.8	0.27	0.14	0.12	0.3	-0.16	-0.15	-0.27	0.34	0.16	0.4
115	-0.1	0.37	0.17	0.26	0.1	0.42	0.01	0.35	0.8	0.87	-0.1
120	-0.16	0.3	-0.37	-0.51	-0.11	0.43	0.59	0.58	-0.05	0.24	0.08
125	-0.27	0.71	0.85	0.02	-0.02	0.59	0.66	0.4	-0.08	0.27	0.74
130	0.71	0.32	0.19	0.5	0.71	0.41	0.51	0.68	0.52	0.93	0.39

## Luminaire

## Lamp

No. of lamps	1	Voltage (V)	24	Report	Filename 210804 DVP-24V-C90-R-3500K.jdt
Lamp flux (lm)	188	Current (A)	0.108	Operator	
Total flux (lm)	188	Power Factor	1	Date	2021-08-04 오후 4:07:39

## Luminous Intensity Data (Continued)

Maximum (cd) : 407

Minimum (cd) : -1

G/C	55	60	65	70	75	80	85	90	95	100	105
0	402	401.36	399.9	401.76	400.7	399.2	401.43	400.38	399.26	398.23	401.3
5	373.48	374.78	376.14	370.2	370.91	373.16	372.36	374.93	372.48	376.67	371
10	311.98	313.51	309.86	312.02	312.27	315.21	313.98	316.4	315.52	319.42	316.53
15	233.77	235.55	236.66	239.1	236.46	239.24	239.08	243.13	242.44	242.45	244.77
20	152.33	156.91	156.11	159.96	158.85	163.68	162.66	166.18	166.96	169.85	171.92
25	75.08	78.07	78.16	82.69	82.02	85.75	86.43	91.03	91.73	95.3	97.26
30	33.76	34.84	35.39	37.22	38.1	40.01	39.5	42.15	40.95	42.38	42.01
35	16.03	17.22	16.67	18.17	18.54	20.07	19.8	20.47	19.83	19.92	19.37
40	7.18	7.54	7.74	8.61	8.88	9.71	10.8	9.95	10.63	10.49	10.04
45	3.71	3.79	3.4	3.79	3.04	4.17	4.88	4.4	4.41	4.85	4.83
50	1.98	1.78	2.14	1.53	1.76	2.06	1.88	2.16	2.42	1.84	2.16
55	0.91	1.22	1.2	1.27	0.79	1.17	1.91	0.95	1.27	0.87	0.65
60	0.8	0.42	0.45	0.99	0.35	1.08	0.82	1.15	0.74	0.84	0.38
65	0.09	-0.44	-0.65	0.94	0.01	0.18	0.67	0.45	1.01	0.61	0.43
70	0.13	-0.65	0.09	-0.1	0.21	0.06	0.53	-0.55	-0.19	-0.19	-0.51
75	-0.05	-0.38	0.44	0.22	-0.1	-0.15	0.16	0.06	0.26	-0.02	0.58
80	-0.09	-0.46	0	-0.14	-0.64	-0.44	0.26	0.07	0.21	-0.36	0.18
85	-0.48	-0.57	-0.33	-0.66	0.22	0.43	-0.44	-0.05	-0.03	0.29	-0.06
90	0.18	0.55	0.64	0.35	-0.14	0.18	-0.1	0.01	0.01	-0.17	0.03
95	0.36	0.05	0.31	0.36	-0.29	-0.02	0.14	0.18	-0.26	-0.06	-0.28
100	0.23	-0.19	-0.46	-0.27	0.08	0.51	0.46	0.44	0.04	0.18	-0.21
105	0.47	-0.01	0.18	0.13	-0.1	-0.1	0.32	0.53	0.29	-0.15	0.6
110	0.35	-0.45	0.14	-0.07	0.25	0.39	0.63	-0.4	0.5	-0.13	-0.18
115	-0.11	-0.1	0.6	0.29	0.5	0.04	0.08	-0.2	0.29	0.52	0.08
120	0.51	0.28	0.21	0.08	0.21	0.21	0.31	-0.15	0.35	0.59	0.45
125	0.78	0.7	-0.41	0.83	0.42	0.03	0.63	0.54	-0.1	-0.07	0.23
130	0.22	0.47	0.74	0.51	1.14	0.6	0.56	1.16	0.89	0.68	0.42

## Luminaire

## Lamp

## Report

No. of lamps	1	Voltage (V)	24	Filename	210804 DVP-24V-C90-R-3500K.jdt
Lamp flux (lm)	188	Current (A)	0.108	Operator	
Total flux (lm)	188	Power Factor	1	Date	2021-08-04 오후 4:07:39

## Luminous Intensity Data (Continued)

Maximum (cd) : 407

Minimum (cd) : -1

G/C	110	115	120	125	130	135	140	145	150	155	160
0	400.94	401.03	398.94	398.79	399.91	397.73	397.46	400.18	401.24	398.94	398.83
5	374.16	372.47	372.98	372	374.64	373.66	374.46	373.02	375.75	374.9	375.25
10	320.65	317.55	321.09	319.86	322.04	320	322.49	322.07	324.17	324.54	326.52
15	247.93	248.35	250.58	250.02	251.49	254.68	256.62	255.8	257.89	259.77	261.7
20	174.66	174.88	178.4	177.15	181.79	181.57	185.16	186.95	190.18	191.08	196.12
25	101.57	101.9	106.4	107.15	112.08	113.21	118.52	120.46	123.78	125.5	129.24
30	44.18	44.47	46.68	46.33	49.95	50.56	55.29	55.37	60	61.51	66.54
35	20.62	19.02	20.63	19.67	20.45	20.65	22.03	21.49	23.63	24.25	25.54
40	9.41	9.87	10.15	9.38	9.65	10.66	10.6	10.04	10.79	11.65	12.35
45	4.04	4.37	4.06	4.95	4.99	5.12	5.46	5.81	6.26	5.43	6.7
50	2.17	1.75	2.51	2.21	2.66	1.33	2.01	2.61	3.28	3.4	3.47
55	1.3	0.35	1.23	1	1.34	1.08	0.84	0.86	1.77	1.42	1.18
60	0.48	0.79	0.06	0.19	1.06	1.05	0.55	0.96	1.07	0.95	0.7
65	0.44	0.08	0.15	0.76	-0.03	0.55	0.27	0.38	-0.15	0.71	-0.17
70	-0.55	0.22	0.1	0.03	0.22	0.09	0.12	-0.2	0.01	0.47	-0.02
75	-0.01	0.01	-0.45	0.42	0.41	-0.42	-0.46	-0.32	0.89	0.32	0.18
80	-0.19	-0.02	-0.55	0.26	-0.55	-0.06	-0.33	0.48	-0.16	0.1	0.71
85	-0.44	-0.1	0.12	0.16	0.51	-0.3	-0.39	-0.12	0.56	0.15	0.77
90	-0.24	0.65	-0.01	0.36	0.21	-0.12	-0.01	-0.09	-0.32	-0.37	0.28
95	0.48	0.44	-0.21	-0.32	-0.15	0.28	0.32	0.34	-0.96	0.19	-0.2
100	0	0.5	-0.2	0.06	-0.22	-0.03	-0.06	0.44	0.39	-0.02	-0.24
105	-0.43	0.29	0.11	0.62	0.33	-0.5	0.18	-0.42	-0.33	-0.05	0.26
110	0.09	-0.15	-0.21	0.58	-0.02	0.24	0.38	-0.16	1.14	0.35	0.63
115	0.13	-0.27	0.42	0.21	-0.27	0.01	0.35	-0.61	-0.06	0.66	0.61
120	0.58	-0.13	0.16	0	0.92	0.44	0.32	0.09	0.23	0.81	0.44
125	0.96	-0.1	-0.17	0.04	0.05	0	0.33	0.86	-0.06	0.27	0.49
130	-0.03	0.8	0.54	0.65	0.42	0.51	0.23	0.76	0.93	0.5	0.13

## Luminaire

## Lamp

## Report

No. of lamps	1	Voltage (V)	24	Filename	210804 DVP-24V-C90-R-3500K.jdt
Lamp flux (lm)	188	Current (A)	0.108	Operator	
Total flux (lm)	188	Power Factor	1	Date	2021-08-04 오후 4:07:39

## Luminous Intensity Data (Continued)

Maximum (cd) : 407

Minimum (cd) : -1

G/C	165	170	175	180	185	190	195	200	205	210	215
0	399.2	398.65	404.78	404.92	405.93	405.28	406.28	403.33	405.1	406.89	402.09
5	375.45	376.77	374.5	391.02	392.91	391.22	392.37	393.01	393.53	386.42	390.29
10	328.37	328.22	325.33	348.1	350.26	349.63	349.78	348.9	352.79	352.6	348.72
15	263.18	267.1	266.64	290.49	291.4	288.89	290.89	288.87	290.46	287.64	288.98
20	195.07	199.04	197.82	219.11	222.61	220.66	221.6	220.06	221.48	217.93	219.81
25	130.08	133.49	133.86	152.36	155.04	154.01	156.07	154.07	155.87	153.28	154.62
30	67.5	71.78	72.21	92.07	94.89	93.19	95.73	93.91	95.7	92.5	94.21
35	26.63	28.18	28.16	39.02	40.3	39.33	41.06	40.33	41.2	39.07	39.63
40	12.19	13.23	13.02	16.47	17.23	17.11	17	16.87	16.27	16.17	15.77
45	6.01	6.33	7.16	8.45	8.68	8.64	8.42	8.03	8.4	7.56	7.73
50	2.94	3.71	3.45	4.33	4.76	4.4	4.72	4.73	4.63	3.86	4.06
55	1.5	2	1.67	2.76	2.21	2.62	2.16	2.38	2.25	1.82	1.82
60	1.21	1.15	0.95	1.42	1.17	1.19	0.54	1.22	0.86	1.12	1.42
65	0.95	0.35	0.86	0.87	0.07	0.01	0.76	-0.11	0.45	0.97	0.94
70	0.41	0.8	-0.08	0.04	-0.11	0.66	-0.28	0.16	0.06	0.62	0.4
75	-0.51	-0.23	0.27	0.64	0.08	-0.47	-0.37	0.04	-0.31	-0.38	0.49
80	-0.65	0.15	0.33	0.31	-0.47	-0.67	0.15	0.11	-0.27	-0.87	0.07
85	0.43	-0.26	0.29	0.29	-0.21	-0.33	-0.11	0.38	0.48	0.43	0.29
90	0.11	-0.12	0.29	-0.54	-0.3	-0.3	0.18	0.23	-0.76	-0.81	0.18
95	0.1	0.43	0.07	0.4	-0.55	0.61	0.84	-0.18	0.07	0.51	-0.17
100	0.65	0.1	-0.23	-0.08	0.23	0.12	-0.21	0.39	0.21	0.37	0.32
105	-0.26	-0.57	0.11	-0.03	-0.16	-0.67	0.76	-0.11	-0.17	-0.45	-0.46
110	0.37	0.26	0.54	0.46	-0.07	0.07	0.13	-0.38	-0.43	0.34	0.47
115	0.9	0.52	-0.02	0.24	-0.16	-0.49	-0.28	0.17	0.2	-0.5	0.38
120	0.75	0.27	-0.13	-0.29	0.25	0.38	0.12	-0.38	0.41	0.64	0.55
125	0.5	0.05	0.51	0.27	0.3	0.05	0.02	-0.16	-0.08	0.92	0.01
130	0.59	0.32	0.55	0.29	0.73	0.45	0.41	0.39	0.29	1.12	0.69



# Luminaire

## Lamp

No. of lamps	1	Voltage (V)	24	Report	Filename 210804 DVP-24V-C90-R-3500K.jdt
Lamp flux (lm)	188	Current (A)	0.108	Operator	
Total flux (lm)	188	Power Factor	1	Date	2021-08-04 오후 4:07:39

## Luminous Intensity Data (Continued)

Maximum (cd) : 407

Minimum (cd) : -1

G/C	220	225	230	235	240	245	250	255	260	265	270
0	402.24	400.75	400.63	402	401.36	399.9	401.76	400.7	399.2	401.43	400.38
5	391.06	391.82	390.89	392.53	393.11	394.15	393.56	393.17	393.91	395.69	393.97
10	348.43	351.08	349.79	351.11	350.99	352.63	353.98	356.54	355.51	356.17	355.4
15	287.16	289.84	288.07	289.38	288.03	292.17	289.21	293.02	290.56	293.15	290.64
20	217.62	220.38	218.44	219.29	217.82	220.15	216.84	218.74	217.24	218.69	216.16
25	151.34	152.7	150.81	151.74	149.21	150.15	148.2	148.86	146.54	147.3	144.24
30	90.61	92.01	89.12	90.16	86.35	87.29	84.45	85.65	82.42	82.73	78.15
35	38.2	38.3	36.01	36.83	35.26	35.63	34.31	35.46	34.15	35.38	34.36
40	15.19	15.13	15.4	15.89	14.12	15.07	15.16	16.16	16.05	16.17	16.4
45	8.05	7.79	8	7.87	7.32	7.49	7.15	7.63	7.67	8.27	8.27
50	4.45	4.16	3.93	3.93	3.37	4.04	3.94	4.27	3.91	3.92	3.98
55	1.82	1.79	2.12	1.89	1.03	1.87	1.6	2.59	1.38	2.21	2.32
60	0.43	1.24	0.58	1.27	1.02	1.31	1.3	0.87	0.7	1.52	1.07
65	1.23	0.46	0.56	0.83	0.68	0.72	1.11	0.4	0.7	0.05	1.11
70	0.54	0.7	0.42	-0.15	-0.18	-0.46	0.14	-0.01	0.42	0.24	-0.19
75	-0.26	-0.29	-0.43	0.71	0.05	0.34	-0.03	-0.41	-0.3	0.22	0.19
80	-0.59	0.02	-0.32	0.15	-0.11	0.09	-0.2	0.31	-0.04	0.04	-0.15
85	-0.36	-0.39	0.29	0.05	-0.42	0.66	-0.55	-0.12	-0.03	0.7	0.05
90	-0.03	-0.05	-0.17	-0.23	-0.14	0.62	-1.21	0.17	0.4	0.62	-0.38
95	0.41	0.42	-0.09	0.19	0.15	-0.13	0.11	0.31	-0.09	-0.25	-0.26
100	-0.11	0	0.17	-0.55	0.25	-0.26	-0.22	-0.2	0.03	0.65	-0.4
105	0.27	-0.58	0.53	-0.36	-0.07	-0.32	0.16	0.28	0.14	0.01	0.03
110	-0.11	-0.41	0.07	-0.18	0.18	0.63	0.95	0.35	0.32	0	-0.27
115	0.37	-0.09	-0.23	0.49	-0.78	0.56	0.04	0.14	0.69	0.77	0.26
120	0.15	0.66	-0.01	-0.19	0.33	0.02	0.66	-0.14	0.01	-0.13	-0.08
125	-0.04	0.39	0.18	-0.13	0.23	0.27	-0.27	0.84	-0.59	0.44	0.6
130	0.77	0.4	0.73	-0.13	0.41	0.52	0.84	0.22	-0.08	0.03	0.62

# Luminaire

## Lamp

No. of lamps	1	Voltage (V)	24	Report	Filename 210804 DVP-24V-C90-R-3500K.jdt
Lamp flux (lm)	188	Current (A)	0.108	Operator	
Total flux (lm)	188	Power Factor	1	Date	2021-08-04 오후 4:07:39

## Luminous Intensity Data (Continued)

Maximum (cd) : 407

Minimum (cd) : -1

G/C	275	280	285	290	295	300	305	310	315	320	325
0	399.26	398.23	401.3	400.94	401.03	398.94	398.79	399.91	397.73	397.46	400.18
5	396.04	394.34	393.28	395.26	393.8	394.16	395.78	395.33	393.22	391.57	393.62
10	358.86	357.76	358.41	354.78	358	354.96	355.17	351.59	350.25	352.04	349.3
15	291.55	288.87	289.78	288.87	289.02	285.73	285.39	281.83	280.3	277.06	277.62
20	216.55	213.45	214.54	209.96	209.49	204.53	205.9	200.51	198.86	195.12	193.79
25	144.48	141.11	139.56	135.18	135.8	130.2	129.35	124.59	123.03	117.91	117.98
30	77.99	72.93	74.02	69.63	68.65	64.36	64.05	60.44	59.56	55.87	55.91
35	35.09	34.1	34.12	31.56	31.47	30.74	29.25	28.23	27.54	26.55	28.07
40	17.11	17.04	16.45	16.15	16.26	15.48	14.78	13.69	13.96	12.83	13.93
45	8.74	8.94	8.82	8.58	8.11	7.27	7.19	6.15	6.53	5.15	6.65
50	3.85	4.15	3.78	4.66	3.91	3.45	3.3	3.29	2.87	2.44	3.37
55	1.66	2.48	1.84	2.16	1.87	1.29	1.89	1.59	1.29	1.88	1.33
60	1.72	0.83	1.31	1.69	1.04	1.21	1.11	1.78	1.28	2.29	1.07
65	0.64	0.6	1.33	0.59	0.25	1.1	0.68	0.61	0.88	0.98	0.69
70	0.74	0.49	0.02	-0.05	0.17	-0.18	-0.04	0.11	0.34	0.27	0.67
75	0.54	0.48	0.28	0.28	0.51	-0.02	-0.35	0.49	0.11	-0.08	-0.19
80	-0.51	-0.31	0.08	0.37	-0.06	0.64	0.48	0.12	-0.34	-0.37	0.35
85	-0.26	0.26	0.43	1.04	0.1	-0.23	-0.04	-0.4	0.43	-0.29	0.15
90	-0.19	0.03	-0.27	-0.13	-0.14	-0.07	0.89	-0.18	-0.41	-0.62	-0.2
95	0.44	0.09	0.05	-0.41	-0.36	-0.2	-0.13	0.21	-0.16	-0.23	0.28
100	-0.06	-0.26	0.21	0.55	0.05	0.37	-0.49	0.07	0.48	0.26	-0.14
105	0.36	-0.08	-0.19	-0.19	-0.23	0.51	0.55	0.11	0.07	-0.08	0.04
110	0.42	0.65	-0.06	0.21	-0.18	0.03	0.02	0.27	0.08	-0.22	0.11
115	-0.17	0.09	-0.18	-0.03	-0.5	0.58	0.22	0.48	0.19	-0.07	0.49
120	0.39	0.16	0.36	0.31	0.09	0.54	0.64	0.23	0.14	0.22	-0.01
125	1.17	0.24	-0.1	0.22	1.21	0.27	0.79	0.68	-0.05	0.56	0.13
130	0.02	0.46	0.54	0.25	0.76	0.13	0.55	0.09	0.93	0.53	0.18

## Luminaire

## Lamp

## Report

No. of lamps	1	Voltage (V)	24	Filename	210804 DVP-24V-C90-R-3500K.jdt
Lamp flux (lm)	188	Current (A)	0.108	Operator	
Total flux (lm)	188	Power Factor	1	Date	2021-08-04 오후 4:07:39

## Luminous Intensity Data (Continued)

Maximum (cd) : 407

Minimum (cd) : -1

G/C	330	335	340	345	350	355	360
0	401.24	398.94	398.83	399.2	398.65	404.78	404.92
5	391.62	390.26	389.79	390.23	387.78	389.5	384.62
10	348.93	346.98	340.68	342.64	339.79	339.53	323.86
15	272.58	272.48	268.93	267.9	263.61	264.64	242.66
20	190.35	191.46	186.09	186.58	180.47	181.47	160.71
25	112.04	112.65	107.01	107.4	103.19	102.32	84.85
30	54.63	55.55	52.87	52.42	51.92	51.57	43.25
35	26.69	27.01	26.8	27.45	27.3	27.16	23.74
40	13.44	13.89	13.91	14.26	14.05	14.31	10.89
45	5.91	5.58	5.99	6.53	6.38	6.33	5.43
50	2.88	2.73	3.95	2.53	2.43	2.61	2.46
55	2	1.47	2.36	2.31	1.93	1.74	1.75
60	1.16	1.23	1.24	1.49	1.1	1.84	1.9
65	0.74	0.32	0.34	0.82	1.02	0.19	-0.2
70	0.89	0.29	0.21	0.38	0.32	0	0.32
75	-0.13	0.09	0.23	-0.47	0.14	0.09	-0.94
80	0	0.46	-0.46	-0.13	-0.72	-0.25	-0.36
85	0.18	0.26	-0.17	0.18	0.48	0.32	0.24
90	-0.06	0.57	0.65	-0.33	-0.51	-0.24	-0.42
95	0.37	0.02	0.12	-0.03	-0.21	0.39	-0.58
100	-0.35	0.02	0.67	-0.22	-0.32	-0.34	-0.19
105	0.02	0.14	-0.12	-0.11	0.11	-0.28	0.43
110	-0.22	-0.01	0.04	0.01	-0.26	0.13	-0.8
115	0.5	0.39	0.27	0.38	0.02	0.49	-0.1
120	0.14	0.61	0.38	0.6	0.39	0.49	-0.16
125	0.93	0.25	0.27	0.03	0.57	0.52	-0.27
130	0.08	0.43	1.5	0.55	0.55	0.8	0.71

## Luminaire

### Lamp

No. of lamps	1	Voltage (V)	24	Report	Filename 210804 DVP-24V-C90-R-3500K.jdt
Lamp flux (lm)	188	Current (A)	0.108	Operator	
Total flux (lm)	188	Power Factor	1	Date	2021-08-04 오후 4:07:39

## Luminous Flux Table

Total Lamp Lumens:	188
Luminaire Efficiency (lm/W):	187.93
CIE Classification:	Direct

Elevation	Lumens	Cumulative	Lamp %	Luminaire %
0	2.40	2.40	1.28	1.28
5	18.34	20.74	11.04	11.04
10	31.86	52.60	27.99	27.99
15	37.58	90.17	47.99	47.98
20	35.48	125.65	66.87	66.86
25	27.06	152.71	81.27	81.26
30	16.65	169.36	90.13	90.12
35	8.50	177.86	94.66	94.64
40	4.43	182.29	97.01	97.00
45	2.35	184.64	98.26	98.25
50	1.25	185.89	98.93	98.92
55	0.72	186.61	99.31	99.30
60	0.47	187.08	99.56	99.55
65	0.22	187.30	99.68	99.66
70	0.06	187.35	99.71	99.69
75	0.01	187.37	99.72	99.70
80	-0.04	187.33	99.69	99.68
85	0.03	187.36	99.71	99.70
90	-0.02	187.34	99.70	99.69
95	0.03	187.37	99.72	99.70
100	0.03	187.40	99.73	99.72
105	0.02	187.42	99.74	99.73
110	0.06	187.48	99.78	99.76
115	0.09	187.57	99.82	99.81
120	0.12	187.68	99.88	99.87
125	0.14	187.82	99.96	99.94
130	0.11	187.93	100.02	100.00

Luminaire

Lamp

No. of lamps 1

Voltage (V) 24

Report

Filename 210804 DVP-24V-C90-R-3500K.jdt

Lamp flux (lm) 188

Current (A) 0.108

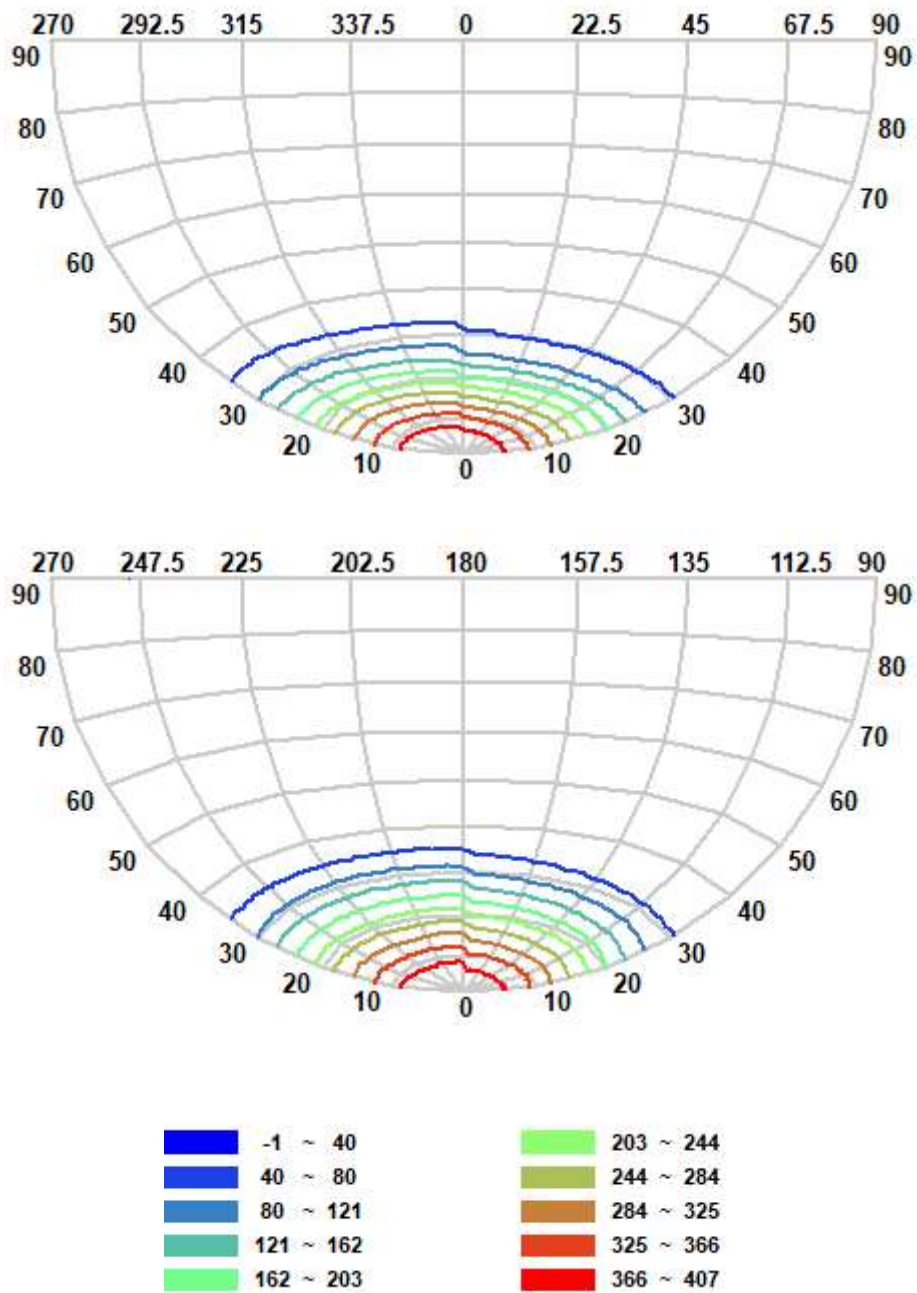
Operator

Total flux (lm) 188

Power Factor 1

Date 2021-08-04 오후 4:07:39

## IsoCandela (Type C)



Luminaire

Lamp

No. of lamps 1

Voltage (V) 24

Report

Filename 210804 DVP-24V-C90-R-3500K.jdt

Lamp flux (lm) 188

Current (A) 0.108

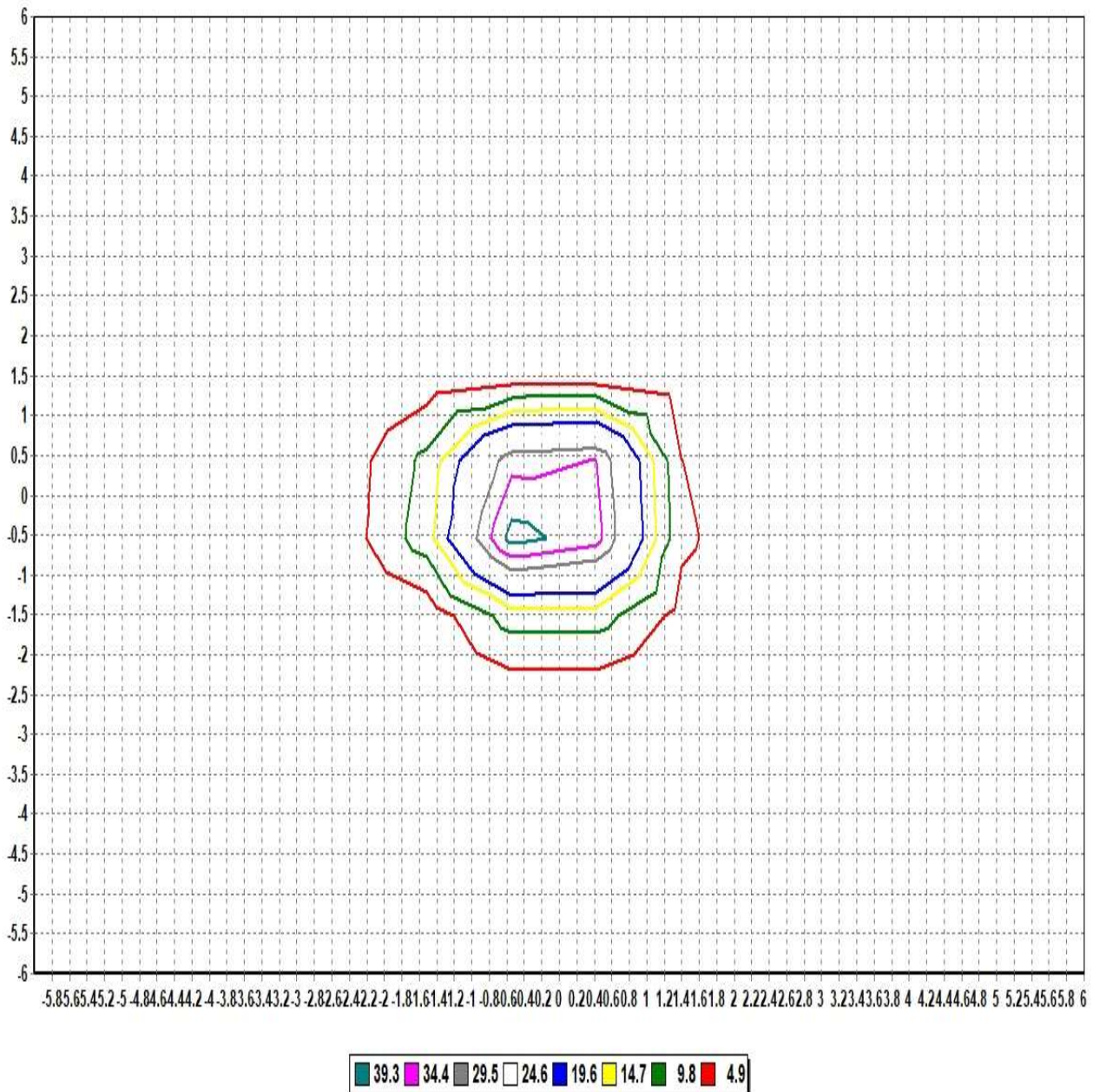
Operator

Total flux (lm) 188

Power Factor 1

Date 2021-08-04 오후 4:07:39

## IsoLux Diagram (Ground)



Pole Height (m): 2.7

Area Width (m): 12

Total Optical Solution Provider



Luminaire

Lamp

No. of lamps 1

Voltage (V) 24

Report

Filename 210804 DVP-24V-C90-R-3500K.jdt

Lamp flux (lm) 188

Current (A) 0.108

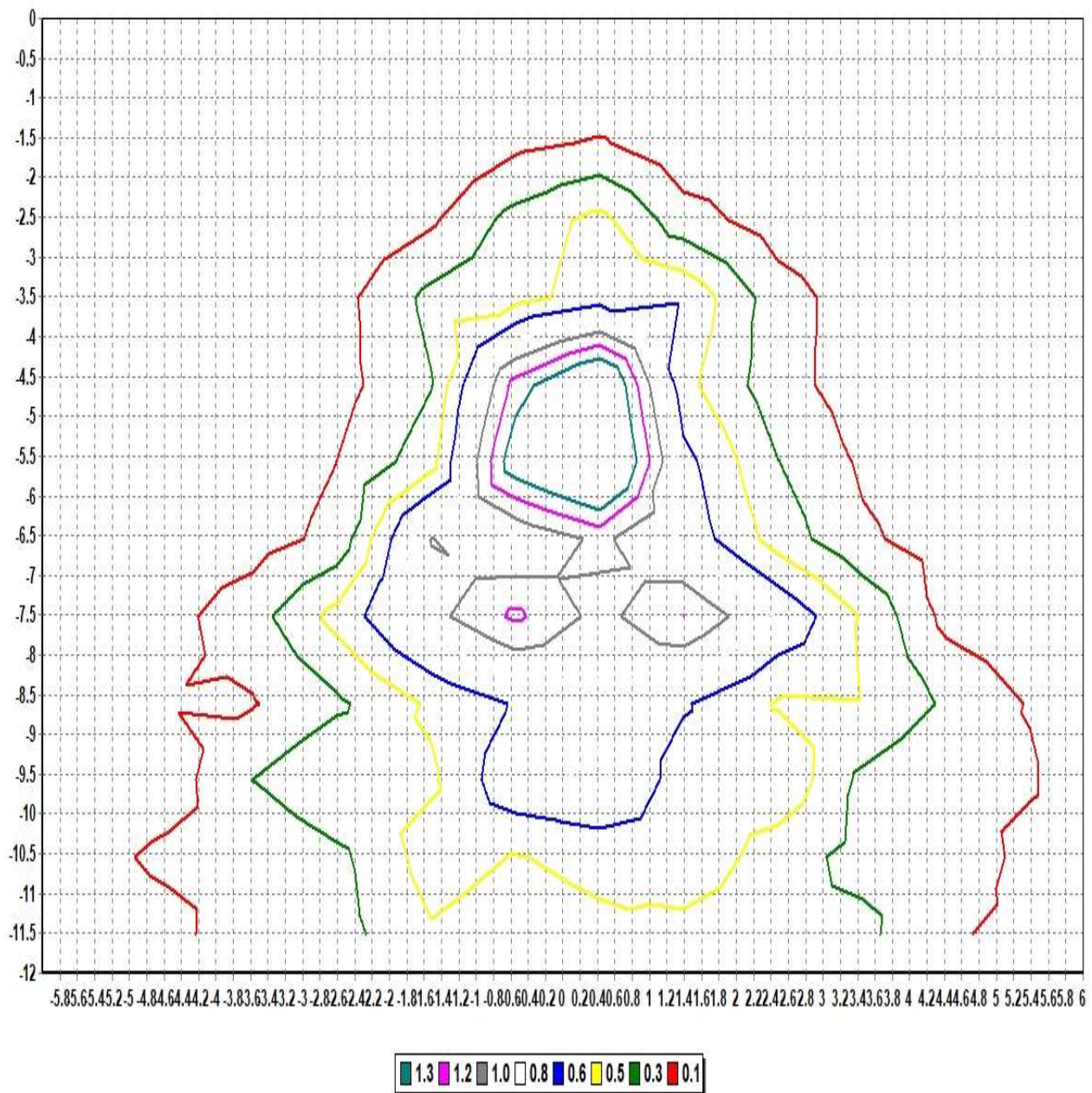
Operator

Total flux (lm) 188

Power Factor 1

Date 2021-08-04 오후 4:07:39

## IsoLux Diagram (Wall)



Pole Height (m): 2.7

Wall Distance (m): 2.7

Aiming Plane: 0

Wall Height (m): 12

Total Optical Solution Provider



## Luminaire

## Lamp

No. of lamps	1	Voltage (V)	24
Lamp flux (lm)	188	Current (A)	0.108
Total flux (lm)	188	Power Factor	1

## Report

Filename 210804 DVP-24V-C90-R-3500K.jdt

Operator

Date 2021-08-04 오후 4:07:39

## Illuminance Levels (Ground)

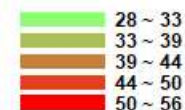
6.00	0.00	0.00	0.00	0.00	0.00	0.01	0.01	0.00	0.00	0.00	0.00	0.00	0.00
5.00	0.00	0.00	0.00	0.01	0.01	0.01	0.01	0.01	0.01	0.00	0.00	0.00	0.00
4.00	0.00	0.01	0.01	0.01	0.01	0.04	0.05	0.03	0.01	0.02	0.00	0.00	0.00
3.00	0.00	0.01	0.01	0.02	0.04	0.09	0.13	0.08	0.04	0.02	0.01	0.01	0.00
2.00	0.01	0.00	0.02	0.04	0.41	0.65	2.53	0.52	0.27	0.04	0.01	0.00	0.00
1.00	0.01	0.02	0.06	0.14	0.77	7.64	26.94	5.00	0.58	0.08	0.04	0.02	0.00
0.00	0.01	0.03	0.10	0.25	5.40	32.34	55.54	26.85	2.65	0.15	0.06	0.03	0.01
-1.00	0.01	0.03	0.09	0.19	1.16	11.50	32.33	8.53	0.92	0.13	0.07	0.02	0.01
-2.00	0.01	0.01	0.03	0.08	0.59	1.02	4.61	1.09	0.54	0.06	0.02	0.01	0.01
-3.00	0.00	0.01	0.02	0.03	0.08	0.16	0.23	0.18	0.07	0.03	0.02	0.01	0.00
-4.00	0.00	0.01	0.01	0.02	0.02	0.07	0.09	0.07	0.03	0.02	0.01	0.01	0.00
-5.00	0.01	0.00	0.01	0.01	0.01	0.02	0.03	0.02	0.01	0.01	0.01	0.00	0.00
-6.00	0.00	0.00	0.00	0.00	0.01	0.01	0.01	0.01	0.01	0.00	0.00	0.00	0.00
-6.00	-5.00	-4.00	-3.00	-2.00	-1.00	0.00	1.00	2.00	3.00	4.00	5.00	6.00	

Illum. (Max.) : 55.5

Illum. (Min.) : 0.00

Illum. (Avg.) : 1.39

All illuminance level values are in lux.





Luminaire

Lamp

No. of lamps 1

Voltage (V) 24

Report

Filename 210804 DVP-24V-C90-R-3500K.jdt

Lamp flux (lm) 188

Current (A) 0.108

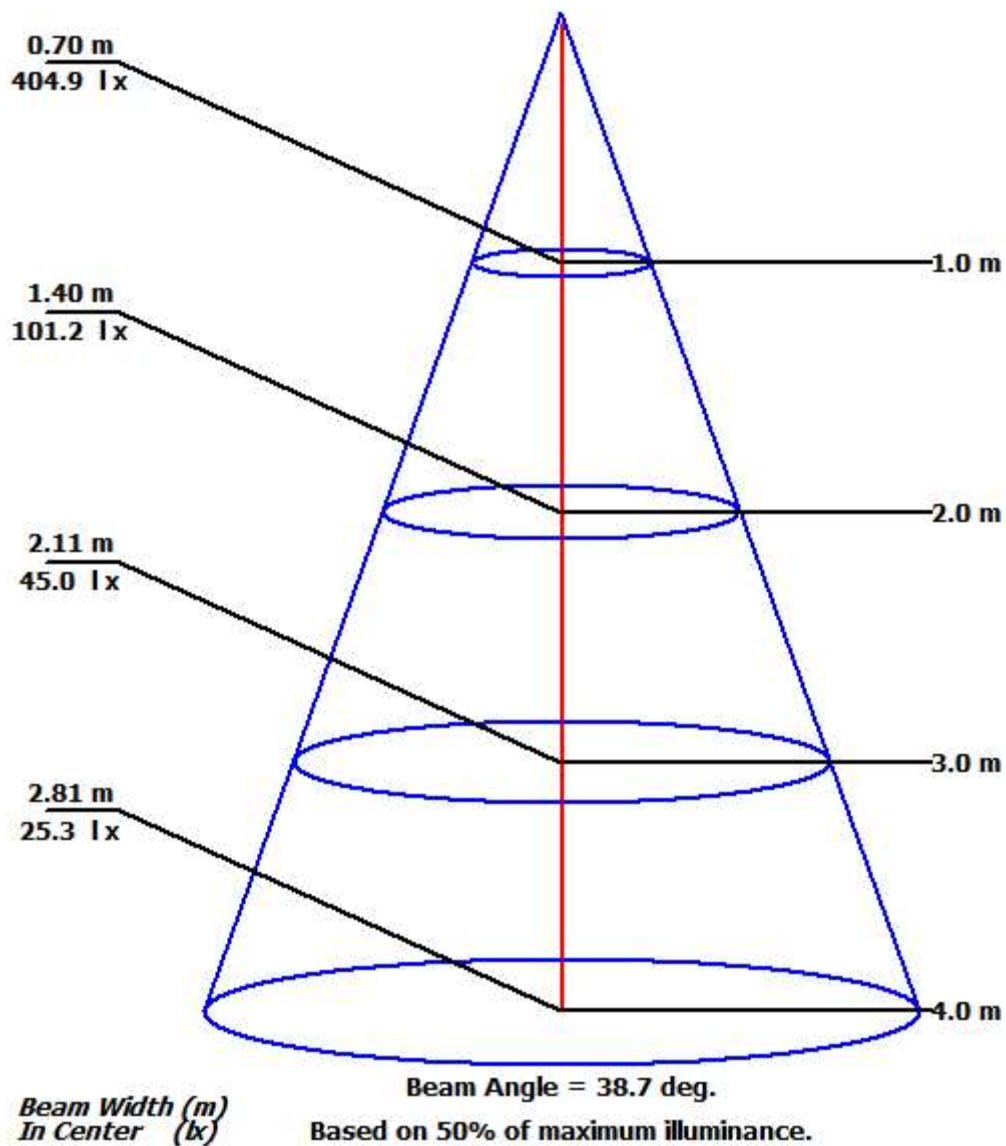
Operator

Total flux (lm) 188

Power Factor 1

Date 2021-08-04 오후 4:07:39

## Illuminance Cone Diagram





## Luminaire

## Lamp

No. of lamps	1	Voltage (V)	24
Lamp flux (lm)	188	Current (A)	0.108
Total flux (lm)	188	Power Factor	1

## Report

Filename 210804 DVP-24V-C90-R-3500K.jdt

Operator

Date 2021-08-04 오후 4:07:39

## Coefficient of Utilization

	Refl. Ceiling (%)	80%	80%	80%	70%	70%	70%	50%	50%	50%	30%	30%	30%	10%	10%	10%	0%
	Refl. Wall (%)	50%	30%	10%	50%	30%	10%	50%	30%	10%	50%	30%	10%	50%	30%	10%	0%
Eff. Floor Cavity Refl.		20%	20%	20%	20%	20%	20%	20%	20%	20%	20%	20%	20%	20%	20%	20%	20%
Room CR 0		1.12	1.12	1.12	1.09	1.09	1.09	1.04	1.04	1.04	1.00	1.00	1.00	0.96	0.96	0.96	0.94
Room CR 1		1.05	1.03	1.01	1.03	1.01	1.00	0.99	0.98	0.97	0.96	0.95	0.94	0.93	0.92	0.91	0.89
Room CR 2		0.99	0.96	0.93	0.98	0.95	0.92	0.95	0.92	0.90	0.92	0.90	0.88	0.89	0.88	0.86	0.85
Room CR 3		0.94	0.90	0.87	0.93	0.89	0.86	0.90	0.87	0.85	0.88	0.86	0.83	0.86	0.84	0.82	0.81
Room CR 4		0.89	0.85	0.81	0.88	0.84	0.81	0.86	0.83	0.80	0.84	0.81	0.79	0.83	0.80	0.78	0.77
Room CR 5		0.85	0.80	0.77	0.84	0.80	0.77	0.82	0.79	0.76	0.81	0.78	0.75	0.79	0.77	0.75	0.73
Room CR 6		0.81	0.76	0.73	0.80	0.76	0.73	0.79	0.75	0.72	0.78	0.74	0.72	0.76	0.74	0.71	0.70
Room CR 7		0.77	0.73	0.69	0.77	0.72	0.69	0.76	0.72	0.69	0.75	0.71	0.68	0.74	0.70	0.68	0.67
Room CR 8		0.74	0.69	0.66	0.74	0.69	0.66	0.73	0.69	0.66	0.72	0.68	0.65	0.71	0.68	0.65	0.64
Room CR 9		0.71	0.66	0.63	0.71	0.66	0.63	0.70	0.66	0.63	0.69	0.65	0.63	0.68	0.65	0.63	0.62
Room CR 10		0.68	0.64	0.61	0.68	0.64	0.61	0.67	0.63	0.60	0.66	0.63	0.60	0.66	0.63	0.60	0.59

